



HI-FLASH CAMERA

WITH FLASH ATTACHMENT

INSTRUCTION FOR USE

TAKES 16 COLOR OR BLACK/WHITE PICTURES WITH 120 FILM

INSTRUCTIONS : - FOR OPERATING HI-FLASH GUN

IMPORTANT

For proper operation of flash gun—one battery must have tip up; the other, tip down. Be sure to use fresh batteries.

TO OPEN CASE—To open flash gun case for insertion of batteries, turn reflector retaining ring to left and lift out reflector.

TO INSERT BATTERIES—Use 1.5 volt Penlight Cells. (UM-3 or “AA” Size) Push batteries against battery springs and slip into place. One battery tip must be up; the other down.

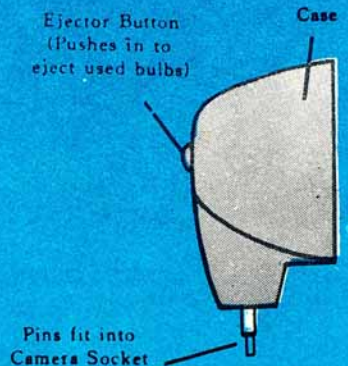
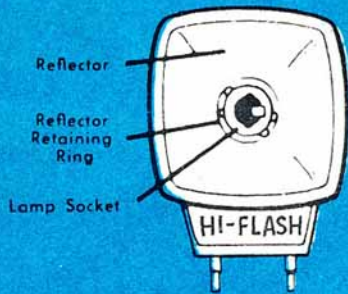
TO CLOSE CASE—Replace reflector and turn reflector retaining ring to right.



ATTACH TO CAMERA—Flash gun is installed by pushing flash gun pins into recentacles on camera.

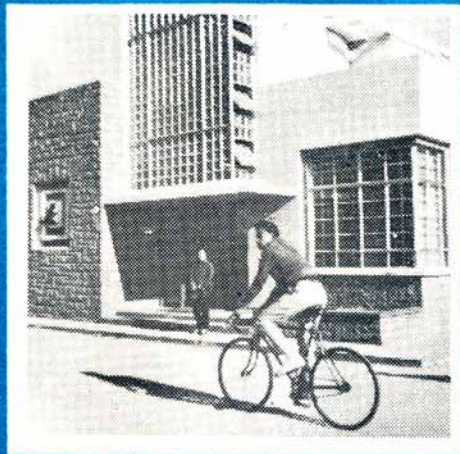
TO INSERT FLASH BULBS—AG-1 (US-1) bulbs must be inserted directly into the flash socket with a slight push.

DO NOT TWIST THE FLASH BULB.



You can take 16 Color or Black/White pictures, size $4\frac{1}{2} \times 4\frac{1}{2}$ cm, on one roll of No. 120 film. The picture on the right shows you the actual size and it can be enlarged if you so wish.

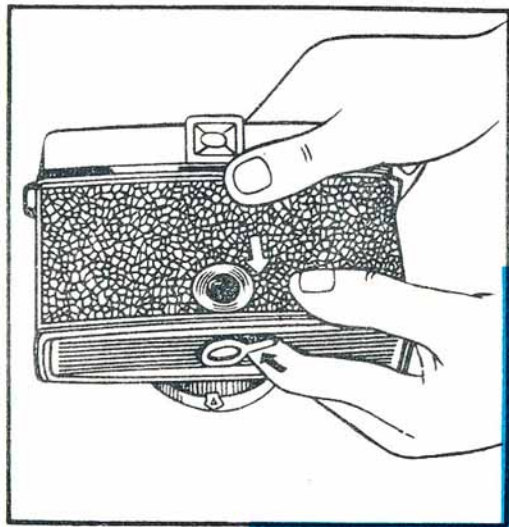
It is advisable to take color pictures in sunny days.

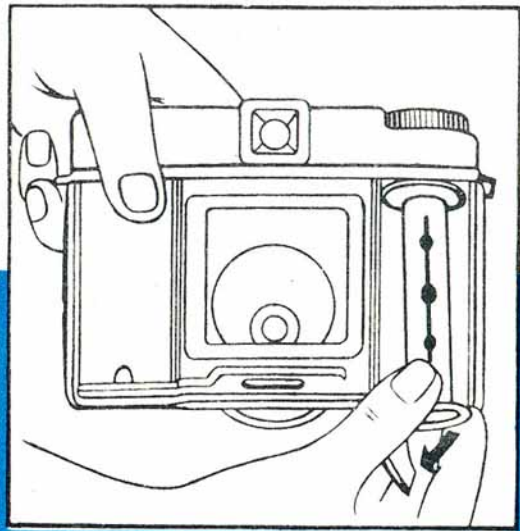


HOW TO LOAD FILM:

IT IS IMPORTANT WHEN LOADING OR UNLOADING FILM TO KEEP CAMERA AWAY FROM DIRECT LIGHT.

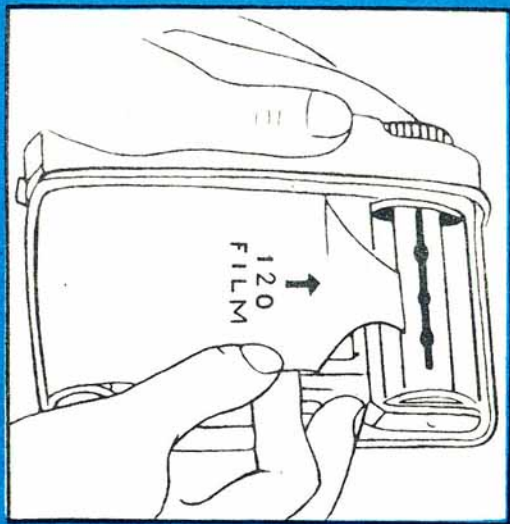
To open the camera turn the catch at the bottom to the word "OPEN", then pull the back cover downwards.

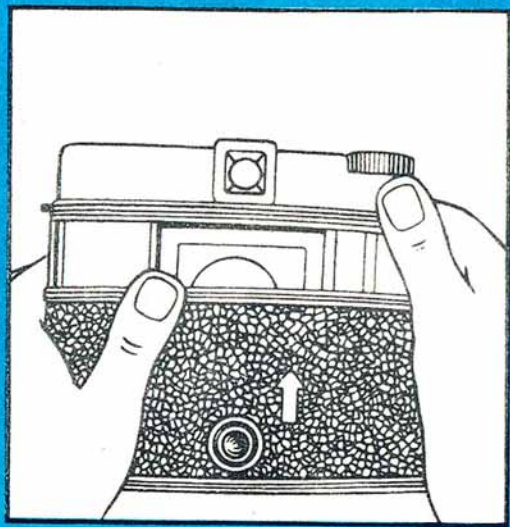




Put the empty spool in the upper spool chamber and swing out the lower spool holder. Put the film in the lower spool chamber with the tapered end of the backing paper towards the empty spool, then swing the spool holder back into the spool chamber.

Remove the adhesive strip of the roll film and pull out the backing paper. Insert the tapered end into the slot in the empty spool and turn the winding knob slowly to ensure that film runs properly.





To close the camera put the back cover in position and turn the catch at the bottom to the word "LOCK".

Turn the winding knob in the direction of the arrow until the number "1" appears in the red window.

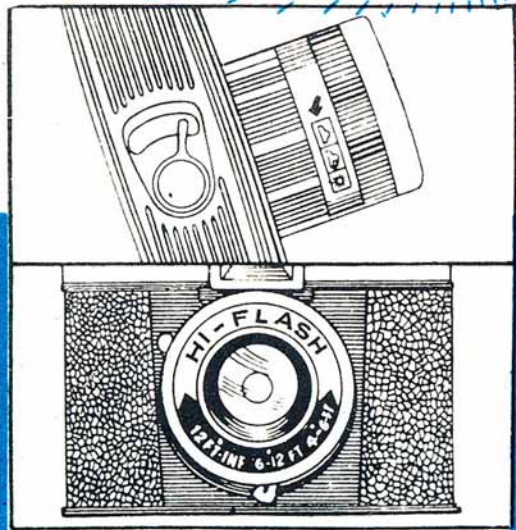
**NOW THE CAMERA IS READY
FOR TAKING PICTURES!**

HOW TO TAKE PICTURES:

DON'T FORGET TO TAKE OFF THE LENS CAP!

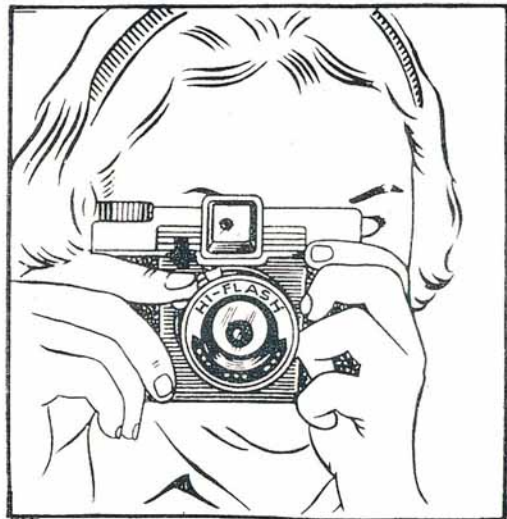
First of all determine if the weather is Bright, Cloudy or Dull and set the aperture setting.

Look through the view finder and aim at the object. Ascertain the distance from the object to the camera and set the distance setting.



Look through the view finder again and compose the picture. Then press the shutter release slowly downwards. The picture is taken.

Turn the winding knob until the next number is seen in the red window. Repeat the above procedure until 16 pictures have been taken.



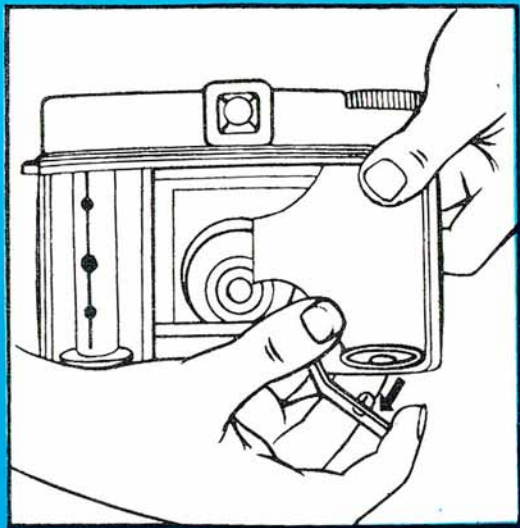
HOW TO UNLOAD FILM:

Turn the winding knob until the film is completely wound into the taking spool.

Open the camera as indicated above and take out the exposed film for developing.

HOW TO USE "BULB" SHUTTER:

The "Bulb" shutter is only used when taking pictures indoor where the light is insufficient. On pressing down the shutter lever the lens remains open until released. In view of this it is important that the camera must be put on a firm place and kept steady.



PRINTED IN HONG KONG